

# Tennis Court Floodlighting Installation and Maintenance



**Arrow Lighting & Electrical**  
**0508 776 337, [support@arrowlighting.co.nz](mailto:support@arrowlighting.co.nz)**  
**[www.arrowlighting.co.nz](http://www.arrowlighting.co.nz)**

With a vast array of floodlights, lamps and control gear components available today it makes sense to use a company that has staff with the knowledge and expertise to provide the most reliable outcome in terms of performance and longevity. This applies to both maintenance of existing lighting systems as well as new turnkey project installations of poles, lights and associated wiring and controls.

Two of Arrow Lighting and Electrical staff have over sixty years of experience in lighting and electrical contracting. This gives the company a leading edge to meet the needs of tennis clubs' floodlighting requirements. This is the case for both older, existing gas discharge, and the latest technology LED floodlighting.

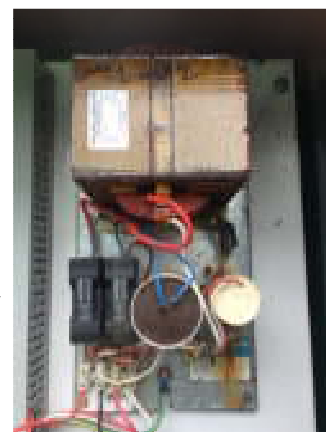
Arrow's managing director, Roger Beuvink, started the company over 30 years ago and Peter Kilby, lighting and projects manager, started working in the New Zealand lighting industry for Philips Lighting thirty years ago after running a successful UK electrical contracting company.

## Turnkey Project Solutions

Arrow has recently worked with two different floodlight suppliers to install new Philips LED floodlights and Steelgal poles at Clevedon Tennis Club and EYE LED fixtures from Ellis & Co at Dunholme Tennis Club in Remuera. Arrow also worked with the Wellington-based company Sun Illumination to install its Italian-made Disano LED floodlights at a difficult-to-access residential court in suburban Auckland. This required the old and rusting steel poles to be removed and replaced with black-gloss designer circular ones, from Auckland column supplier Gess, fitted in their place. This installation went from eight 400 Watt gas discharge lights to 8 x 196W LED fittings with much less spill light.

## LED Floodlighting

Light emitting diodes or LEDs have brought about a major breakthrough in lighting technology – affecting all types of lamps and light fittings. LED distinguishes itself by not only providing substantial energy savings but also by giving very long, maintenance-free life with sustained light levels. High intensity discharge (HID) floodlighting lamps depreciate in light output over their lives, which are measured in thousands of hours. LEDs, on the other hand, last for tens of thousands of hours and,



Floodlight control gear needs to be specifically matched with the lamp



Clevedon Tennis Club has new LED floodlights which also required two new repositioned poles to make way for a new court drainage system



Dunholme Tennis Club now benefits from low glare EYE LED floodlighting from Ellis & Co

with excellent lumen maintenance and much less light wasted as spill-light and other inefficiencies. LED lighting has the advantage that it comes to full output as soon as it is switched on – giving instant full brightness. HID lamps take time to warm up and, unlike some LEDs, cannot be dimmed and, have to be changed regularly as they get dimmer with age. While being more costly at the outset LED saves on maintenance and re-lamping costs in the long run.

## Repairs and Maintenance

With older floodlighting systems there's an inevitable requirement for maintenance. Not only do lamps need replacing but also control gear items such as ignitors, ballasts and capacitors can fail and, being outdoors, rust and corrode. Arrow Lighting & Electrical staff are well-versed with control gear and lamp maintenance and are backed up by office staff proficient and knowledgeable in matters flood-lighting (Kilby was a former floodlighting equipment product manager). At the office they maintain a database of available components and lamp characteristics as well as information about individual clubs' equipment so as to complete the clubs' repairs as fast as possible. The company also knows all the leading suppliers in the control gear and lamp industries and can source the required parts as quickly as possible. On site, Arrow staff are trained to respect the playing surfaces when using access equipment. The staff use support pads under cherry-picker outreach arms to prevent damage to court surfaces and also have current elevated work platform (EWP) licences for your added peace of mind. Arrow takes pride in rectifying faults and getting its clients' floodlighting faults mitigated to get their lighting up and running as soon as possible. Tennis pro Josh Constantine of Mt Eden Tennis Club says "Arrow inherited our problematic floodlighting system and proceeded to rectify a number of issues we were having. They got suppliers to free-issue their failed components, at one point, and nowadays our members enjoy good evening tennis as a result." Arrow Lighting & Electrical aims to get your floodlights up and running and keep them that way.



A little innovation was required to get access equipment on to this suburban tennis court

**Call Tyrone, Roger or Pete on 0508 776 377 or email the above address.**